

## The School Sport Survey facts and figures *ffeithiau a ffigurau'r Arolwg ar Chwaraeon Ysgol*



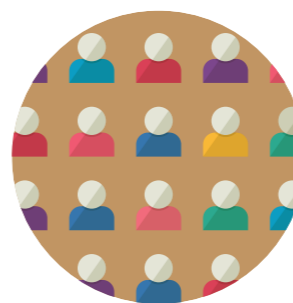
The survey was open for 14 weeks from 8th April to end of July

*Roedd yr arolwg ar agor am 14 wythnos rhwng 8fed Ebrill a diwedd Gorffennaf*



109,500 pupils had their say on sport – 37% of all pupils

*109,500 o ddisgyblion wedi lleisio eu barn am chwaraeon – 37% o'r holl ddisgyblion*



Largest UK survey of sport and young people.

*Arolwg mwyaf y DU ar chwaraeon a phobl ifanc.*



921 individual schools qualified for reports

*921 o ysgolion unigol wedi cymhwyso am adroddiadau*



1060 teachers took part

*1060 o athrawon wedi cymryd rhan*



Most responses received in one week – 11,413 (from the 10th to 14th June)

*Y nifer uchaf o ymatebion a dderbyniwyd mewn wythnos – 11,413 (rhwng y 10fed a'r 14eg Mehefin)*



Most responses in a day – 2,708 (Wednesday 17th July)

*Y nifer uchaf o ymatebion a dderbyniwyd mewn diwrnod – 2,708 (dydd Mercher 17eg Gorffennaf)*



80% of secondary schools and 56% primary qualified for a report (59% overall)

*80% o'r ysgolion uwchradd a 56% o'r ysgolion cynradd wedi cymhwyso am adroddiad (59% yn gyffredinol)*